

SEPARADORAS DE ACEITE Y GAS-OIL

Application

Purification or clarification of mineral oils used in marine installations and power stations (fuel and lubricating oils).

Working principle

Separation takes place in a solids-retaining bowl that can be arranged for either clarification or purification. In both cases, the contaminated oil is fed into the separator through the centre, and it is separated by centrifugal force into its various phases, the heaviest phase (sludge and water) being forced outwards to the periphery of the bowl. The accumulation of sludge is periodically removed from the bowl by hand.

Installation

The oil is pumped, heated, and separated as shown in the figure. A liquid seal in the separator bowl prevents the oil from escaping through the water outlet. If this seal is broken, an alarm device is activated. With unmanned engine rooms, the signals are transmitted to a remote control unit. When the seal is broken, the three-way valve shuts off the oil feed and the oil is recirculated until the fault is corrected.



Fig. 1. Separator model MAB 103B complete with feed/discharge pump and fittings for connection to a preheater.

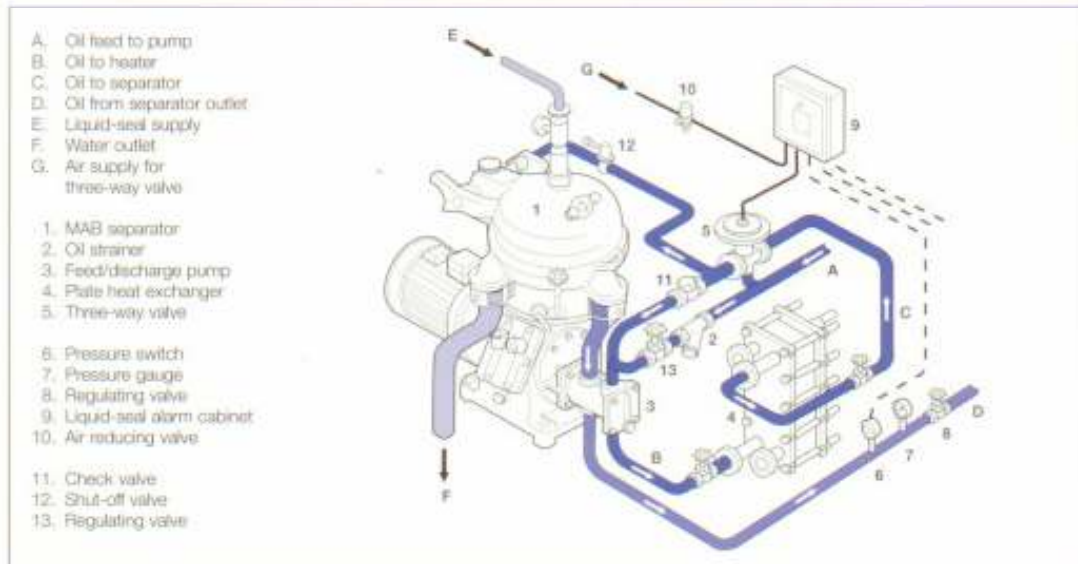


Fig. 2. Schematic installation layout of MAB separator with plate-type oil heater.